

Graham Rotary News

July 24, 2008

Graham Rotary Club • Club No. 6107 • District 7690
A Certified 100% Paul Harris Fellowship & Gold Club

Meeting at Graham Friends Church
through the end of 2008
700 N. Main Street, Graham, NC 27253
Mail: P.O. Box 301, Graham, NC 27253

www.grahamrotaryclub.org

Upcoming Programs & Events

- 7/24 Board of Directors, 11:30am
- 7/24 Charles Allen, District Governor,
Official visit to 6107
- 7/24 Jeff Eldridge,
Buzz Vanderwerff, Life Span
- 8/7 P.K. Patnik, Travels to Iraq
- 11/6 6:30-9PM, Foundation Banquet,
High Point Country Club
- 4/23-26/2009 District Conference
Hilton Myrtle Beach Resort & Conference Center

Minutes: July 17, 2008

Graham Rotarians present were: Joel Walker, Don Covert, Jody Wallace, Dexter Barbee, Greg Scott, Jeff Eldridge, Reggie Urner, Angelica Santiago, Jeff Prichard, Clenon

account at end of year. Someone commented on how we must be a non-profit organization. There was brief discussion for the need to raise more funds.

Chris visited the local Optimist Club recently and commented on how



Dave Laughlin inducts Angelica Santiago into the Paul Harris Fellowship.

The Four-way Test

1. Is it the truth?
2. Is it fair to all concerned?
3. Will it build goodwill and better friendships?
4. Will it be beneficial to all concerned?



Russell, Ron Blevins, Randy Day, Chris Rollins, George Bason, Bonnie Johnson, Paul Cobb, Dave Laughlin, and Mark Ryman. There were no visiting Rotarians. Dave's guest was Jason Averill.

The meeting was opened with the Pledge of Allegiance and was followed by the giving of thanks by Mark.

Dave welcomed Angelica into the Paul Harris Fellowship, giving her the pin, medal, and certificate, after which the entire club greeted her with handshakes, hugs, and congratulations.

Treasurer Bonnie reported that there was \$14 per member left over in

they have grown. Mike Conklin, a member of the Optimists and of the Homebuilders Association asked Chris to deliver a challenge to the Graham Rotary to donate \$300 toward a \$1500 fund for Brooke Bristow, a local, 11-year old girl with Neurofibromatosis Type 1. She has asked for a playhouse in her back yard. The Homebuilders will do the work but they are asking for help with the costs of materials.

Continued on next page...

2008-2009 Rotary Leadership

Dong Kurn Lee

Rotary International President

Charles Allen

District 7690 Governor

Jeff Eldridge

Asst. District 7690 Governor

Dexter Barbee

Area Foundation Representative

Graham Rotary Officers

Dave Laughlin, *President*

221-8974, dflaughlin@msn.com

Phil Moseley, *President-Elect*

228-0501, pmoseley@netpath.net

Paul E. Cobb, Jr., *Secretary*

227-1495, paul@ceb-pa.com

Bonnie Johnson, *Treasurer*

226-3610, jibonnie@triad.rr.com

Clenon Russell, *Sergeant-at-Arms*

226-4911

Chuck Carroll, *Past President*

570-6291, cjarroll@bbandt.com

Committee Chairs

ADMINISTRATION CHAIR

Jody Wallace

578-3884, grahamdent@bellsouth.net

COMMUNICATIONS CHAIR

Mark Ryman

684-5634, pastor@grahamfriends.org

DISTRICT CONFERENCE CHAIR

Vacancy

FAMILY OF ROTARY CHAIR

Bret Cobb

227-1495, bret@ceb-pa.com

FOUNDATION CHAIR

Dr. Joel Walker

222-8698, joelwyatt@triad.rr.com

INTERNATIONAL CHAIR

Terry McNeil

506-4157, mcneilt@alamance.cc.nc.us

MEMBERSHIP CHAIR

Don Kehler

584-3094, donkehler@earthlink.net

PROGRAMS CHAIR

Russell Guy

227-8300, guy@omnimap.com

VOCATIONAL CHAIR

Jeff Eldridge

227-0120 x2468,

jeff.eldridge@piedmontng.com

YOUTH CHAIR

Vacancy

July Birthdays

Russell Guy 7/9/1954

Bill Inge, Jr. 7/10/1945

Jody Wallace 7/12/1969

Mark Ryman 7/23/1955

Phillip Moseley 7/26/1947

July Anniversaries

Dr. Joel W. & Phyllis Walker 7/5/1964

W. Terry & Susan McNeil 7/6/1980

More information is available at www.caringbridge.org/visit/brookebristow/. The topic will be discussed at the Board meeting next Thursday.

The 2nd Annual Ray Taylor District 7690 Golf Tournament will be held at the Pinewood Country Club September 18th. More information is available on the District website. The link is under "Where?" on our club

Rotary Club over for lunch and a tour when it's open. You guys pick a date and we'll make it happen."

There will be new streets, houses, and villas. 273 units are planned in the total project.

Jason drew our winning 50:50 ticket, #786841 held by Jeff Eldridge. Jeff did not draw the queen. Jeff showed no signs of disappointment since there was only \$12 in the pot



Greg Scott and Jeff Eldridge look over plans of the Challenge Golf Course development.

website.

Hari Patel has resigned.

Jason Averill, the head golf pro at the Challenge Golf Course, was Dave's program. Jason talked about the development under way at the course, including houses, a new club house, pool, fitness center, and golf shop. Jason stated, "We want to have the Graham

after our new president cleaned it out two weeks ago. (Yes, he did so by drawing the Queen of Spades.)

The meeting concluded with the 4-Way Test.

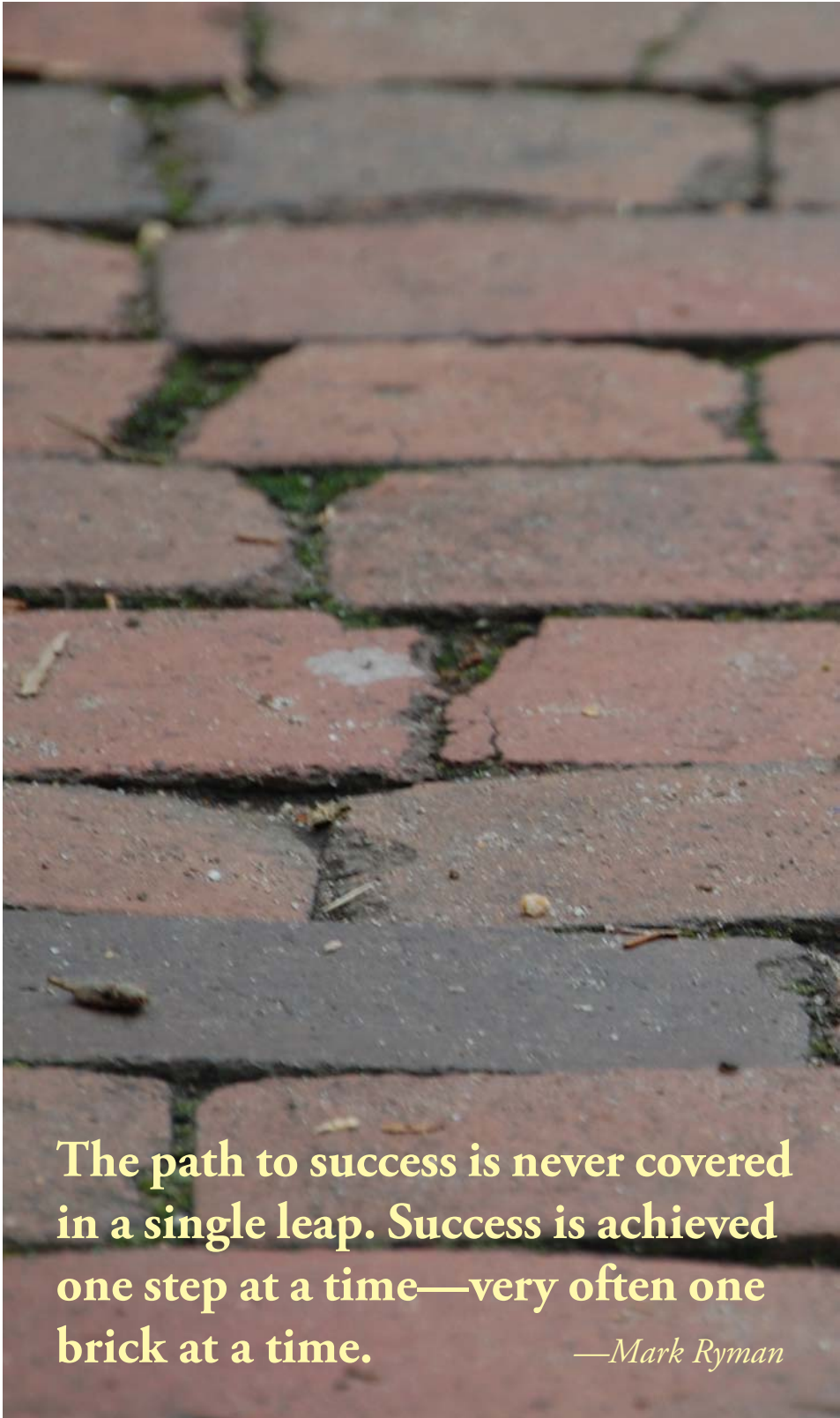
—Mark Ryman



Paul Harris Fellows

*The Graham Rotary Club is a
100% PHF club and a
100% Sustaining Member club.*

- Clenon W. Russell 2/2/87
- Donald B. Covert 9/30/87
- Joel W. Walker 3/25/88
- Zeb Barnhardt 1/5/1989
- Phyliss F. Walker 7/24/92
- Paul E. Cobb, Jr. 10/8/93
- William T. McNeil 3/24/94
- William Andrew Inge, Jr. 11/11/96
- Dexter Barbee, Jr. 1/23/97
- Donald E. Kehler 3/30/97
- Gregory D. Scott 7/17/98
- Troy Woodard 7/17/98
- Pradeep K. Patnaik 10/10/01
- Bret Cobb 2/15/02
- W. Phillip Moseley 3/1/02
- Jody P. Wallace 3/27/03
- Michael C. Shoffner 3/27/03
- Jeff Eldridge 10/21/03
- Dave Laughlin 1/8/04
- George Bason, Jr. 2/26/04
- Chuck Carroll 11/15/04
- Hari Patel 4/13/06
- Sergio Guzman 4/13/06
- Bonciel Johnson 4/13/06
- Irene Barbee 4/5/2007
- Jeff Prichard 4/5/2007
- Mark Ryman 4/5/2007
- Reginald Turner 8/23/2007
- Russell Guy 8/23/2007
- Chris Rollins 8/23/2007
- Ty Reed 10/4/2007
- Angelica Santiago 12/6/2007
- Randy Day ?



**The path to success is never covered
in a single leap. Success is achieved
one step at a time—very often one
brick at a time.**
—Mark Ryman

Graham Rotary Meeting Attendance

(32 members)

	Jan 2008	Feb 2008	Mar 2008	Apr 2008	May 2008	June 2008	July 2008	Aug 2008	Sept 2008	Oct 2008	Nov 2008	Dec 2008
Percentage	68%	58%	62%	71%	54%	58%						
Number	25	21	22	26	21	20						

For makeup locations, visit www.rotary7690.org or make up online at www.rotaryclubone.org.