



Graham Rotary News

Graham Rotary Club • Club No. 6107 • District 7690
A Certified 100% Sustaining Paul Harris Fellowship & Gold Club • **February 19, 2009**

Meeting at the Graham Civic Center
503 McGee Street, Graham
Mail: P.O. Box 301, Graham, NC 27253

www.grahamrotaryclub.org

Upcoming Programs & Events

- 2/19 Steve McGilvray
Sgt. Duane Flood, Special Olympics of NC
- 2/26 Terry McNeill
Martin H. Nadelman, President of ACC
- 3/5 Coral Erikson, ARMC, Russell Guy
- 3/12 Jeff Prichard, Sherry Morris, A Heart's Cry
- 3/19 Ty Reed
- 3/26 Chris Rollins, Fred Nelles, Cartridge World
- 4/2 Carrie Stone on her Rotary GSE trip
to South Australia, Russell Guy
- 4/4 Family of Rotary NC Zoo Trip
- 4/9 GSE team visit, Dave Laughlin
- 4/16 Clenon Russell
- 4/17 Golf Tournament
- 4/23 Angelica Santiago
- 4/30 Greg Scott

Head Count Our per capita giving so far this year is \$27.89. We are currently 42nd out of 57 clubs in our district. Our per capita giving last year was \$232.43, which made us 6th in the district. Remember, our Rotary year ends June 31st.



4/23-26
District
Conference

Hilton Myrtle Beach Resort & Conference Center
Early Registration (before 2/25/09): \$225/person

Meeting Minutes February 12, 2009

Mike Enoch was a guest of Don Kehler. Don Nance, who is a past-president of Graham Rotary Club visited.

The GSE team will have breakfast

Our program chair today was Don Kehler. He introduced Dan Rice of Piedmont Truck Tires who spoke with us briefly about the business. The meeting was adjourned early so that we could go to the plant and have a tour of the facility.



Dave and Don look over a \$20,000 tire that is ready for repair at Piedmont Truck Tire.

at the Cracker Barrel on April 9th. Their housing and transportation are arranged and they will be our program at our lunch meeting. Please plan on attending!

Our final tally for the recent shoulder sale and raffle—we profited \$1300 on the raffle and \$1000 on the shoulder sale.

Our golf tournament will be April 17th. A committee will be formed to begin the planning. Please mark your calendars so that you can get a team together to participate.

50/50: The winning ticket was held by Bonnie but she failed to pull the winning card. The pot now stands at \$241.

—Jody Wallace

Are You Goin'?

This Wednesday, February 25th, is the deadline for early registration for this year's exciting District Conference in Myrtle Beach, SC. To get that extra discount, registration forms need to be sent in to the District Office by Wednesday. There is also a special conference rate at the Hilton Myrtle Beach

continued on next page...

2008-2009 Rotary Leadership

Dong Kurn Lee

Rotary International President

Charles Allen

District 7690 Governor

Jeff Eldridge

Asst. District 7690 Governor

Dexter Barbee

Area Foundation Representative

Graham Rotary Officers

Dave Laughlin, President

684-9250, dflaughlin@msn.com

Phil Moseley, President-Elect

228-0501, pmoseley@netpath.net

Paul E. Cobb, Jr., Secretary

227-1495, paul@ceb-pa.com

Bonnie Johnson, Treasurer

226-3610, jibonnie@triad.rr.com

Clenon Russell, Sergeant-at-Arms

226-4911

Chuck Carroll, Past President

570-6291, cjarroll@bbandt.com

Committee Chairs

ADMINISTRATION CHAIR

Jody Wallace

578-3884, grahamdent@bellsouth.net

COMMUNICATIONS CHAIR

Mark Ryman

684-5634, pastor@grahamfriends.org

DISTRICT CONFERENCE CHAIR

Angelica Santiago

585-1888, ms.santiago.a@gmail.com

FAMILY OF ROTARY CHAIR

Bret Cobb

227-1495, bret@ceb-pa.com

FOUNDATION CHAIR

Dr. Joel Walker

222-8698, joelwyatt@triad.rr.com

INTERNATIONAL CHAIR

Terry McNeil

506-4157, mcneilt@alamance.cc.nc.us

MEMBERSHIP CHAIR

Don Kehler

584-3094, donkehler@earthlink.net

PROGRAMS CHAIR

Russell Guy

227-8300, guy@omnimap.com

VOCATIONAL CHAIR

Jeff Eldridge

227-0120 x2468,

jeff.eldridge@piedmontng.com

YOUTH CHAIR

Zeb "Barney" Barnhardt

270-7474, zebarnhardt@gmail.com

Resort. (www.rotary7690conference.com)

We are also still looking for conference sponsors. If your club is attending this year, we would like to have at least one Bronze Sponsor (\$500) representing each club or community. Do you have a business that would be interested? If so, please let us know before March 1st, 2009.

Plan to join us as we "Make Dreams Real" at District Conference. You don't want to miss the fun and fellowship as we recognize our district clubs and share what Rotary is all about.

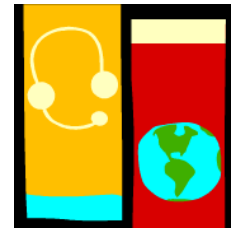
Yours in Rotary Service,
David Caughron, Chair

Rotary District 7690 Conference 2009

www.rotary7690conference.com

chamber43@northstate.net

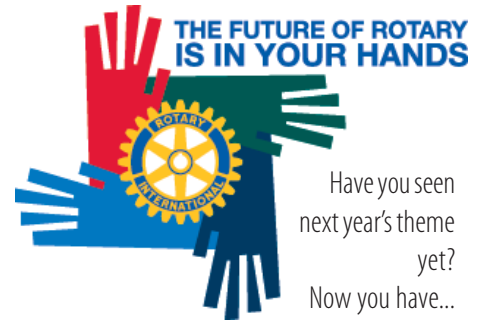
Office: 336-495-1100



Meetings Online

If you are somewhere else when the Graham Rotary Club meets, you may now catch all of the meeting highlights and the program online or via iTunes.

Search iTunes for "Graham Rotary Club" and subscribe to the podcast or go to our homepage and click the above graphic to take you to the recordings.



Have you seen
next year's theme
yet?
Now you have...

Graham Rotary Meeting Attendance

The number is a percentage of the number of members and the weekly average attendance of the meetings that month.

	Jan 2008	Feb 2008	Mar 2008	Apr 2008	May 2008	June 2008	July 2008	Aug 2008	Sept 2008	Oct 2008	Nov 2008	Dec 2008
Percentage	68%	58%	62%	71%	54%	58%	61%	68%	63%	65%	63%	56%
Number	25	21	22	26	21	20	20	22	20	21	21	18
	Jan 2009	Feb 2009	Mar 2009	Apr 2009	May 2009	June 2009	July 2009	Aug 2009	Sept 2009	Oct 2009	Nov 2009	Dec 2009
Percentage	74%											
Number	24											

For makeup locations, visit the Rotary meetings below or www.rotary7690.org or listen to our podcast online and notify the Secretary that you did.

Alamance Breakfast Rotary Club

Monday, 6:45am, O'Hara's
Restaurant, Ramada Inn,
Burlington, NC

Rotary Club of Alamance

Tuesday, 12:15pm, O'Hara's,
Ramada Inn, Burlington, NC

Yanceyville Rotary Club

Tuesday, 12:30pm, Caswell Pines
Golf Course, 2380 County Home
Rd, Blanch, NC

Burlington Rotary Club

Monday 5:45pm, Occasions, 286
East Front Street, Burlington, NC



**You can talk about doing something
or going somewhere but
you will never actually get there
unless you begin the journey.**



Paul Harris Fellows

Clenon W. Russell	2/2/87
Donald B. Covert	9/30/87
Joel W. Walker	3/25/88
Zeb Barnhardt	1/5/1989
Phyllis F. Walker	7/24/92
Paul E. Cobb, Jr.	10/8/93
William T. McNeil	3/24/94
William Andrew Inge, Jr.	11/11/96
Dexter Barbee, Jr.	1/23/97
Donald E. Kehler	3/30/97
Gregory D. Scott	7/17/98
Troy Woodard	7/17/98
Pradeep K. Patnaik	10/10/01
Bret Cobb	2/15/02
W. Phillip Moseley	3/1/02
Jody P. Wallace	3/27/03
Michael C. Shoffner	3/27/03
Jeff Eldridge	10/21/03
Dave Laughlin	1/8/04
George Bason, Jr.	2/26/04
Chuck Carroll	11/15/04
Sergio Guzman	4/13/06
Bonciel Johnson	4/13/06
Irene Barbee	4/5/2007
Jeff Prichard	4/5/2007
Mark Ryman	4/5/2007
Russell Guy	8/23/2007
Chris Rollins	8/23/2007
Ty Reed	10/4/2007
Angelica Santiago	12/6/2007

*The Graham Rotary Club is a
100% PHF club and a
100% Sustaining Member club.*